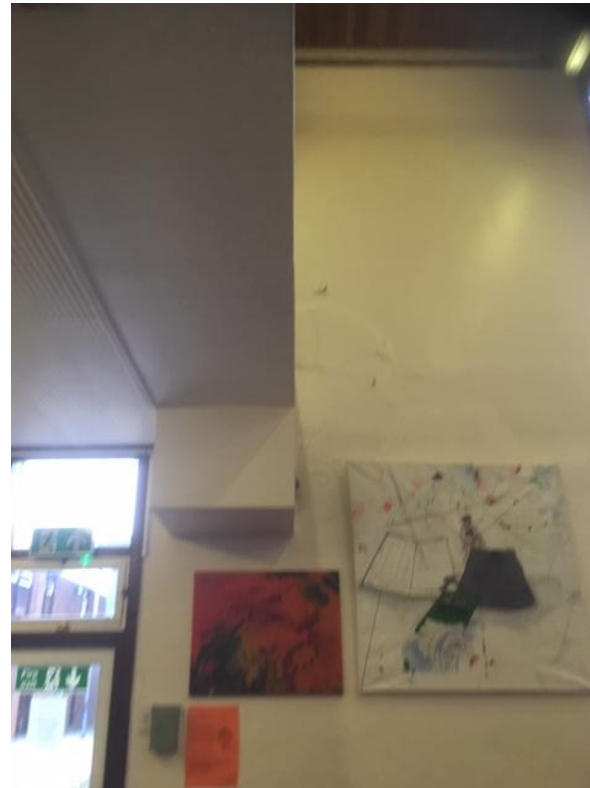


Project 1 – Refurb of Small hall

- Current benches and wall, and potential similar tables with seats attached as pavilion seats



Project 2 – Landscaping 6th form Quadrangle into outdoor ‘learning space’



- Outside quadrangle near 6th form

Other pics

- View from 6th form to main school building – potential for walkway



- Large format picture with 'donated by PA'



- Outdoor path through trees to Park Lane entrance'

